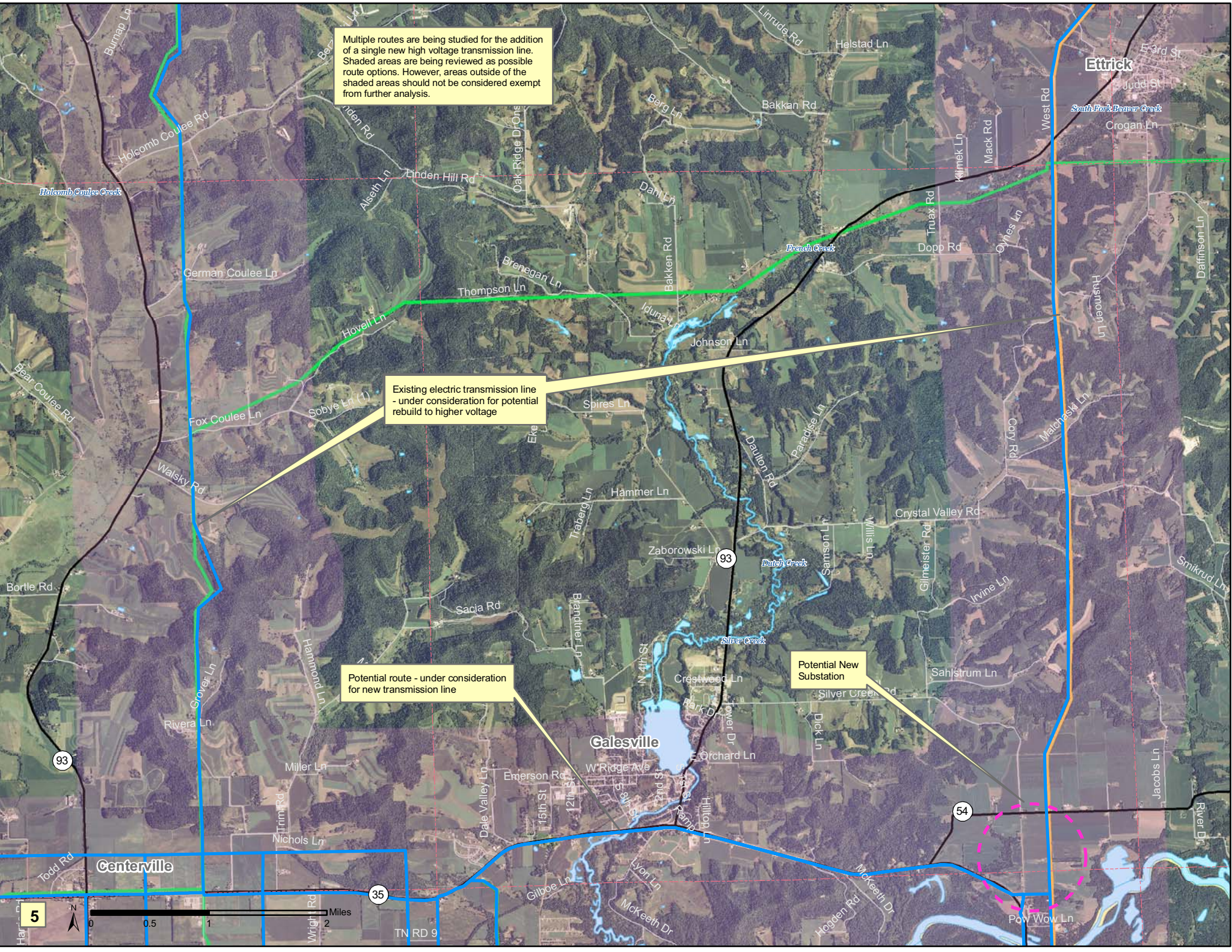


Multiple routes are being studied for the addition of a single new high voltage transmission line. Shaded areas are being reviewed as possible route options. However, areas outside of the shaded areas should not be considered exempt from further analysis.

Existing electric transmission line - under consideration for potential rebuild to higher voltage

Potential route - under consideration for new transmission line

Potential New Substation



TN RD 9