

Central Minnesota Municipal Power Agency • Dairyland Power Cooperative • Great River Energy
Minnesota Power • Minnkota Power Cooperative • Missouri River Energy Services • Otter Tail Power Company
Rochester Public Utilities • Southern Minnesota Municipal Power Agency • WPPI Energy • Xcel Energy

JULY 2011

CapX Quarterly

We want to hear from you.
Contact us at www.capx2020.com or:

Fargo-St. Cloud-Monticello

Darrin Lahr, routing lead
Jerry Chezik, project manager
1.866.876.2869
fargoinfo@capx2020.com

Brookings County-Hampton

Dan Leshner, routing lead
Randy Fordice,
communications specialist
1.888.473.2279
brookingsinfo@capx2020.com

Hampton-Rochester- La Crosse

Tom Hillstrom, routing lead
Chuck Thompson,
Dairyland Power Cooperative
1.800.238.7968
lacrosseinfo@capx2020.com

Bemidji-Grand Rapids

Jim Metcalf,
land management lead
Cindy Kuismi,
communications specialist
1.888.373.4113
bemidjiinfo@capx2020.com



CapX Quarterly

JULY 2011

About the CapX Quarterly

The CapX Quarterly is a quarterly newsletter to inform and update interested stakeholders about CapX2020 project status and milestones. For more information about CapX2020, please visit the project website at www.capx2020.com.

The CapX Quarterly is primarily distributed via e-mail. Sign up for future issues at www.capx2020.com. If you do not have internet access, please call 612.330.5701 to receive a printed version (if you have previously called, you will continue to receive the printed version). The next issue will be distributed in October 2011.

www.capx2020.com

Power line construction work along I-94 between Monticello and St. Cloud to start in August

The CapX2020 utilities will begin using helicopters for work on the project in August. Helicopters will be flying in close proximity to the new transmission structures along I-94 between Monticello and St. Cloud. A helicopter will assist in the stringing of transmission conductor (wire) from structure to structure. Implosive connectors will also be used in the line construction to splice transmission conductor joints. The split second detonation creates a flash and a loud boom near the top of the structure. Motorists are reminded that stopping or slowing on I-94 is illegal and unsafe.

HELICOPTERS & EXPLOSIONS

Power line construction work along I-94 between Monticello and St. Cloud August through October



Advertisements like this one will be on display at area gas stations, rest areas and in newspapers to inform local residents as well as motorists traveling along I-94 about the construction work.

PROJECT UPDATES

Brookings County-Hampton 345 kV project

The South Dakota Public Utilities Commission (SD PUC) unanimously approved the project's Facility Permit on June 14.

Landowner contacts are scheduled to begin in late July.

On June 16, the Midwest ISO granted the project

conditional approval as a multi-value project (MVP) status. The MVP designation is a new tariff that enables projects that meet one of three criteria to be financed by all MISO member utilities in 12 states and Manitoba. Final MVP designation is expected in December.

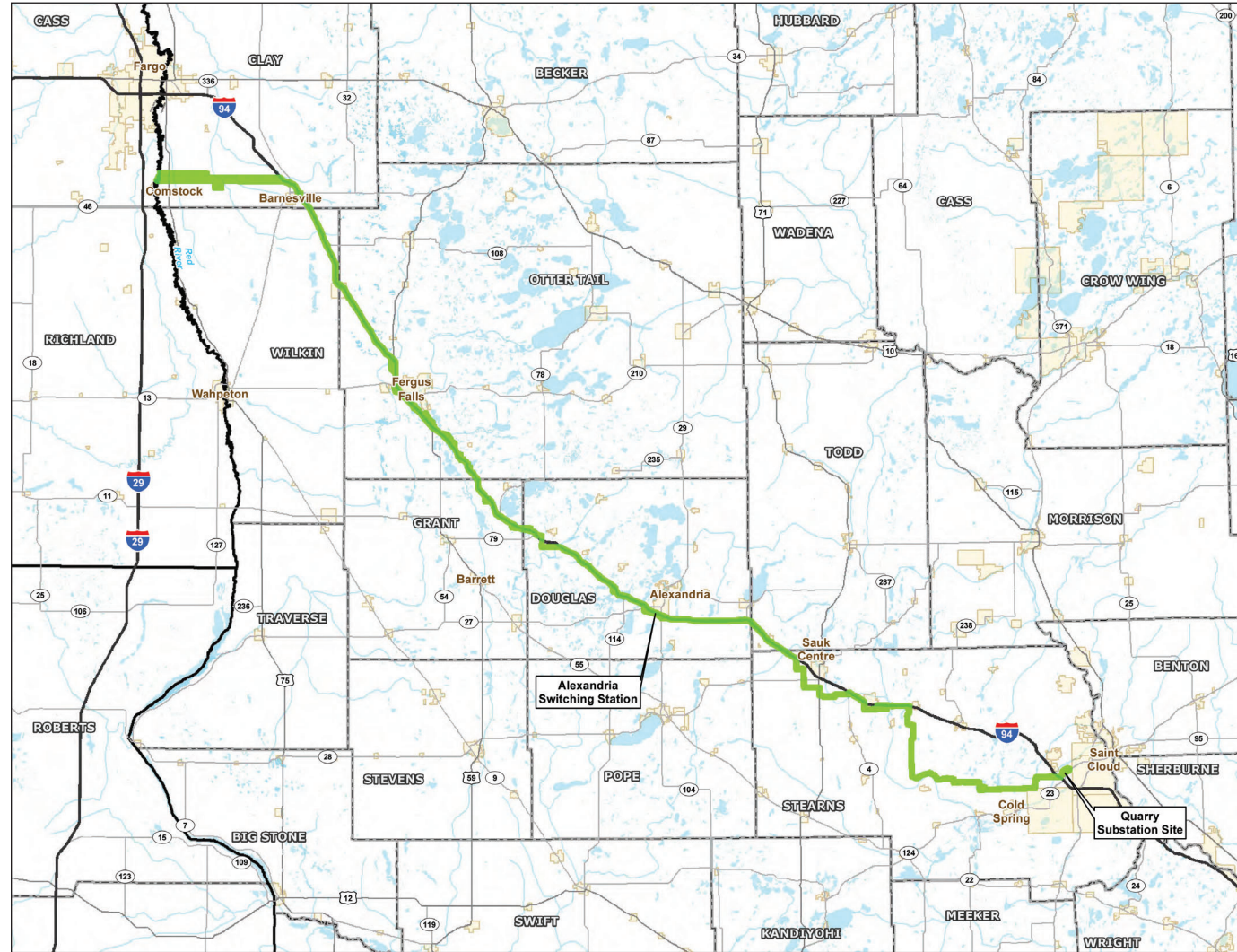
Fargo-St. Cloud-Monticello 345 kV project

Fargo-St. Cloud

The Minnesota Public Utilities Commission (MN PUC) approved the project's final route. It generally follows the preferred route along Interstate 94 from the North Dakota border south of Fargo to the Alexandria Switching Station. From Alexandria, the line will continue east mostly along I-94 to Sauk Centre where

it heads south along county and township roads near Albany, Collegeville and St. Joseph to the new Quarry Substation west of St. Cloud. View detailed aerial maps here.

Land management representatives have begun easement acquisition discussion with landowners.



Legend	
	PUC Approved Route
	Municipal Boundary
	County Boundary
	Lake
	River

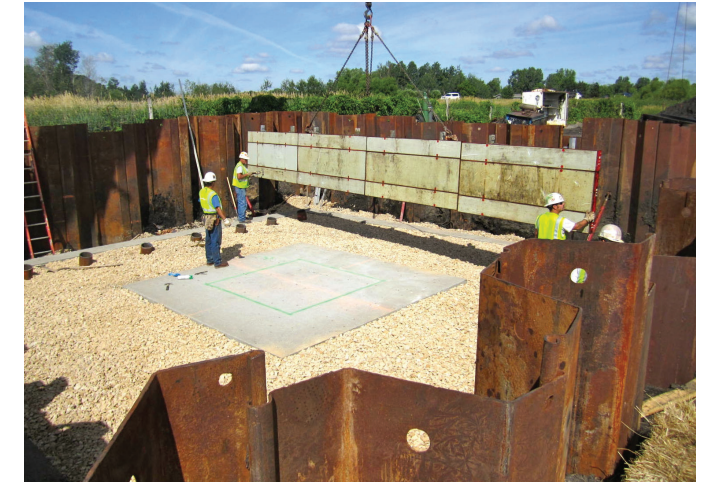
Fargo-St. Cloud-Monticello 345 kV project

Monticello-St. Cloud

Only four of 157 transmission poles remain to be installed. Poles start at the Monticello Nuclear Generating Plant and head west generally paralleling Interstate 94 to the new Quarry Substation northwest of St. Cloud.



Native vegetation in the Bel Claire Marsh near St. Cloud is reestablishing less than six months after a structure was constructed for the Monticello-St. Cloud project.



Crews lower a form into place prior to pouring concrete on a 32-foot-square foundation, one of the last two for the Monticello-St. Cloud project.

Bemidji-Grand Rapids 230 kV project

Winter tree clearing is complete. Construction is expected to start in August.

Landowner outreach and right-of-way work continues.



Crews unloaded transmission structures near Bena in preparation for construction to start later this summer.

Hampton-Rochester-La Crosse 345 kV project

The Public Service Commission of Wisconsin (PSCW) ruled the project's Certificate of Public Convenience and Necessity (CPCN) as complete on June 9, triggering a 360-day deadline for ruling. Public scoping meetings on the draft Environmental Impact Statement took place in Buffalo and Centerville, Wisconsin on July 14 and 20.

Public hearings on the Minnesota Route Permit application took place June 14-16 in Plainview, Pine Island and Cannon Falls; evidentiary hearings were June 20-21 and 25 in St. Paul. The administrative law judge's route recommendation is expected in the fall, with the MN PUC's route decision by the end of the year.