

# CapX2020 UPDATE

MAY 2011

## Administrative law judge recommends route for Fargo-St. Cloud 345 kV transmission line

**A**dministrative law judge (ALJ) Beverly Heydinger issued her findings of fact, conclusions and route recommendation for the CapX2020 Fargo-St. Cloud 345 kilovolt (kV) transmission line project on April 25, 2011. Her report is available at [www.puc.state.mn.us](http://www.puc.state.mn.us) (search for eDocket ET2, E002/TL-09-1056) as well as at [www.CapX2020.com](http://www.CapX2020.com).

After reviewing the record, including public comments, the ALJ recommended that a Route Permit be issued for a route that follows the Applicant's modified preferred route from the Minnesota border south of Fargo, North Dakota, to Alexandria, which generally follows Interstate 94, as well as I-94 between Alexandria and Sauk Centre and an alternate route south of Albany, Collegeville and St. Joseph to the Quarry Substation west of St. Cloud.

Although the ALJ recommended a route in her report, other route options are not exempt from consideration by the Minnesota Public Utilities Commission (MN PUC) when making its final decision on the Route Permit application.

The next step in the Route Permit process: The MN PUC will schedule time at an official

meeting to deliberate and discuss the record and consider the ALJ's recommendation. The date will be posted on the MN PUC's web calendar. The MN PUC has the final authority over the selection of the transmission line's final route. A final decision is expected in summer 2011.

### Engineering and construction

If the MN PUC selects the ALJ's recommended route, construction of the line is expected to generally follow an alignment identified in the Route Permit application (please see map). Based on the current level of review, it is expected that in areas where the transmission line parallels a county or state road, it would generally be located 8-10 feet from the edge of the right-of-way. Where the line parallels I-94, it is expected to follow an alignment that is generally 25 feet from the edge of the right-of-way. The exact location of the poles will continue to be evaluated to balance landowner, agency and project needs.

To view the Route Permit application, visit <http://bit.ly/hzaNfe>.

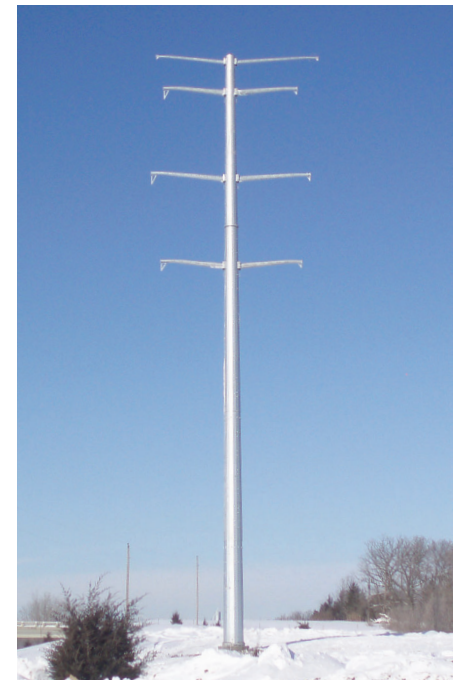
Additional information will be posted at [www.CapX2020.com](http://www.CapX2020.com) when available.

# CapX2020

Delivering electricity you can rely on

PO Box 9451  
Minneapolis, MN 55440

Presorted  
First-Class Mail  
U.S. Postage  
**PAID**  
Anoka, MN  
Permit No. 3302



**We want to hear from you.**  
**Contact us at [www.capx2020.com](http://www.capx2020.com) or:**

Project development manager contact – Xcel Energy  
Darrin Lahr, routing lead  
Jerry Chezik, project manager  
PO Box 9451  
Minneapolis, MN 55440-9451  
1-866-876-2869  
[fargoinfo@capx2020.com](mailto:fargoinfo@capx2020.com)

*Central Minnesota Municipal Power Agency • Dairyland Power Cooperative • Great River Energy  
Minnesota Power • Minnkota Power Cooperative • Missouri River Energy Services • Otter Tail Power Company  
Rochester Public Utilities • Southern Minnesota Municipal Power Agency • WPPI Energy • Xcel Energy*

 @capxprojects

# Fargo-St. Cloud 345 kV route recommended by law judge

The administrative law judge issued her route recommendation April 25 for the Fargo-St. Cloud 345 kV transmission line. The Minnesota Public Utilities Commission makes the final decision on the route and has not yet ruled; a decision is expected in summer 2011.

